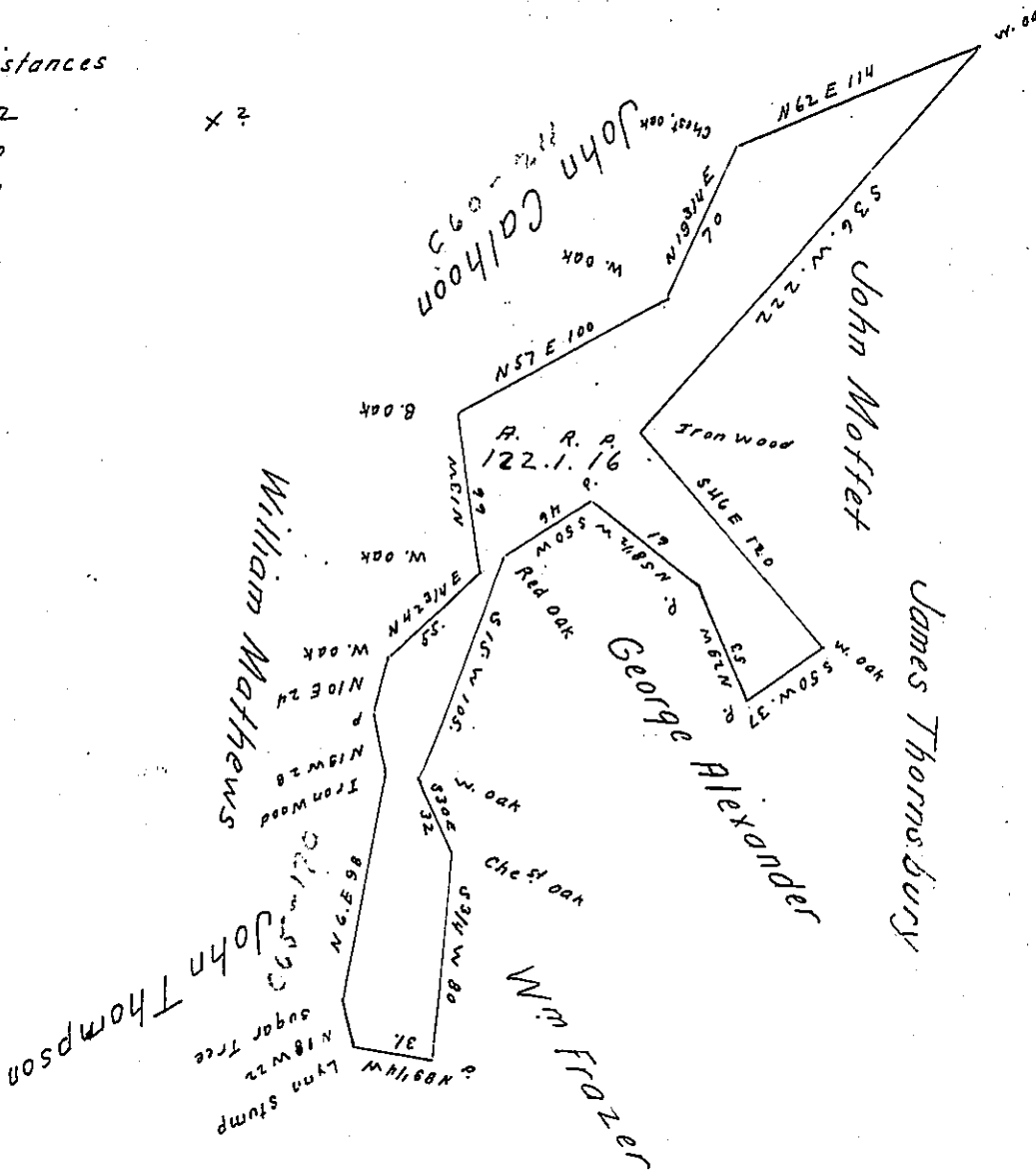


Greene - BEAVER

The Courses & Distances

S. 36 W.	222
S. 46 E.	120
S. 50 W.	37
N. 29 W.	53
N. 58 1/2 W.	61
S. 50 W.	46
S. 15 W.	105
S. 30 E.	32
S. 7/4 W.	80
N. 89 1/4 W.	31
N. 18 W.	22
N. 6 E.	98
N. 10 W.	28
N. 10 E.	24
N. 42 3/4 E.	55
N. 13 W.	66
N. 57 E.	100
N. 19 3/4 E.	70
N. 62 E.	114



The Above Draught represents a Survey Executed in Pursuance of a Warrant granted to Jesse Goodrich & Robert Moffet Dated the 17th of August A. D. 1822. and Executed Jany. 31st 1823. Situate in Green Township. Beaver County. containing 122 Acres 56 perches & Allowance of Six per Cent for Roads &c.

I. Ross W. Law. Deputy Surveyor do Certify that the above Draught was Entered on the Books when the same came into my possession and I believe was Executed by Hugh McCallough Esq^r or his assistant. Sept 29th 1825

To Gabriel Hiester Jr. Esq^r } R. W. Law D.S.
Surveyor General

Part of the above is included in a Survey upon Warrant to James Thornsbury dated 29th Jany. 1823.

IN TESTIMONY that the above is a copy of the original remaining on file in the Department of Internal Affairs of Pennsylvania, made conformably to an Act of Assembly approved the 16th day of February, 1833, I have hereunto set my Hand and caused the Seal of said Department to be affixed at Harrisburg, this twenty seventh day of January 1905.

Loose P. Brown
Secretary of Internal Affairs